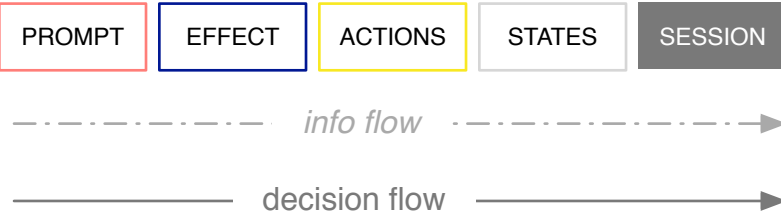
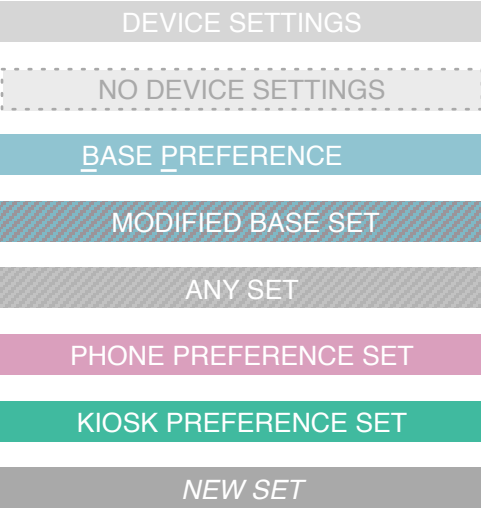
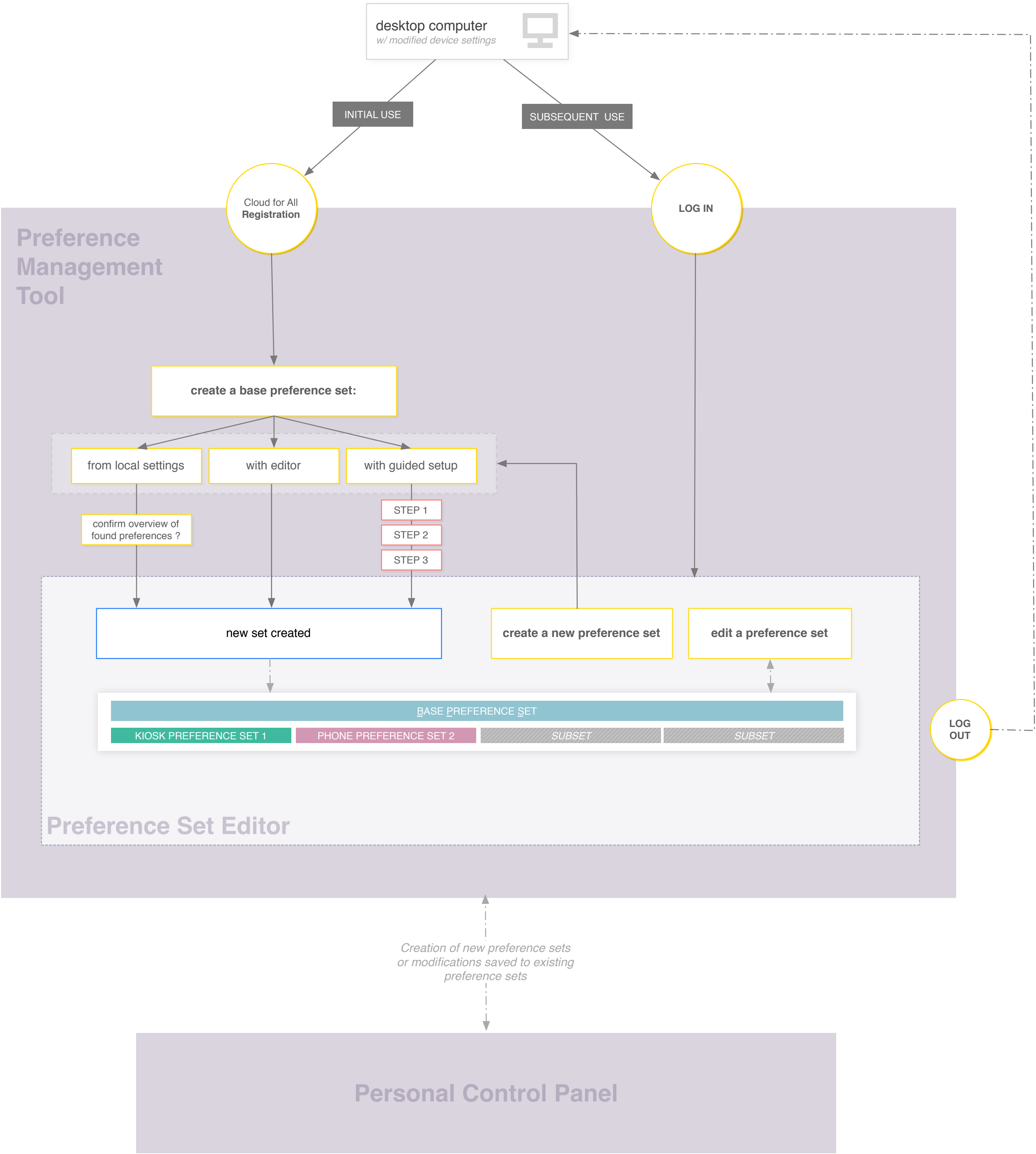
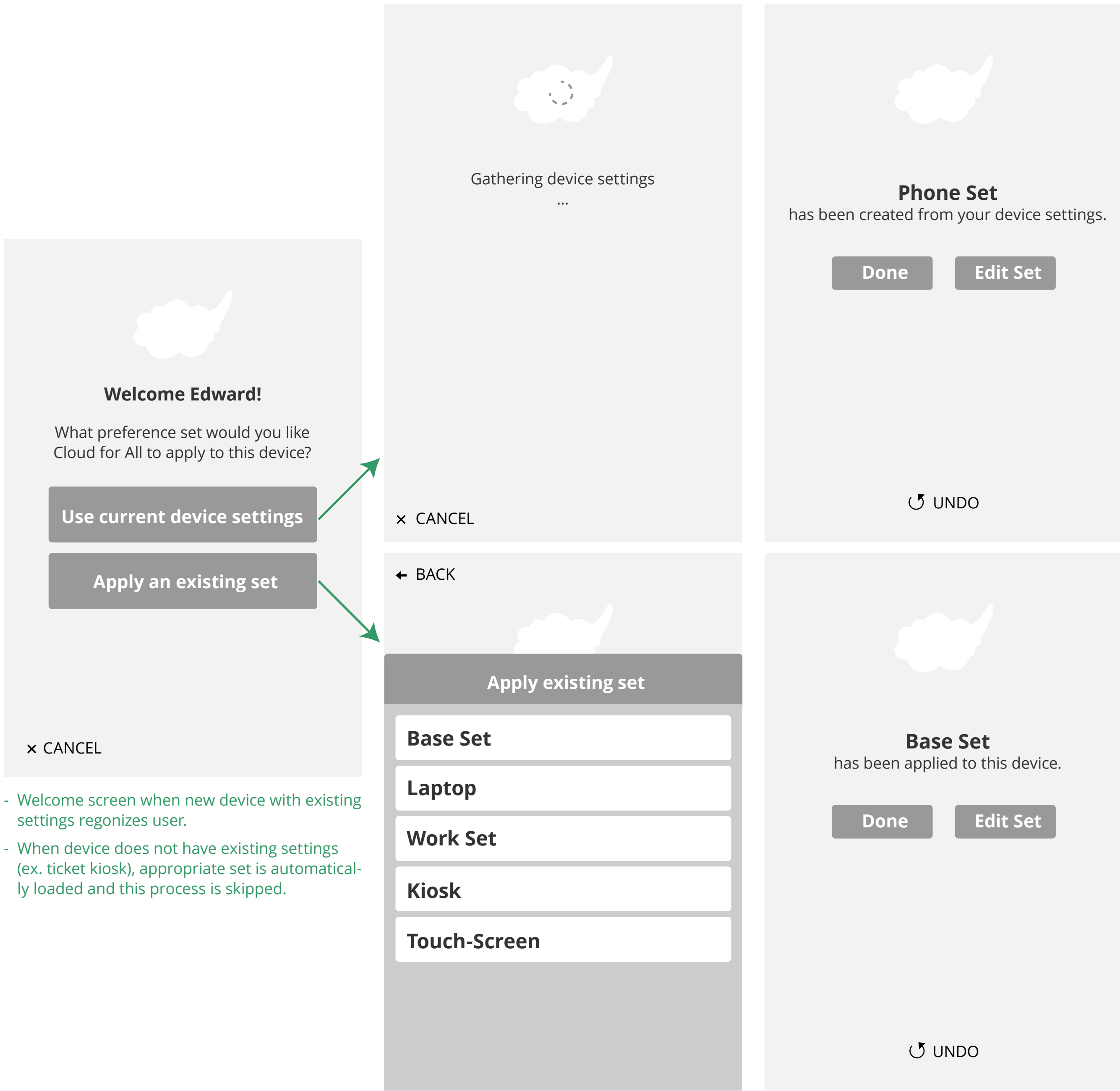
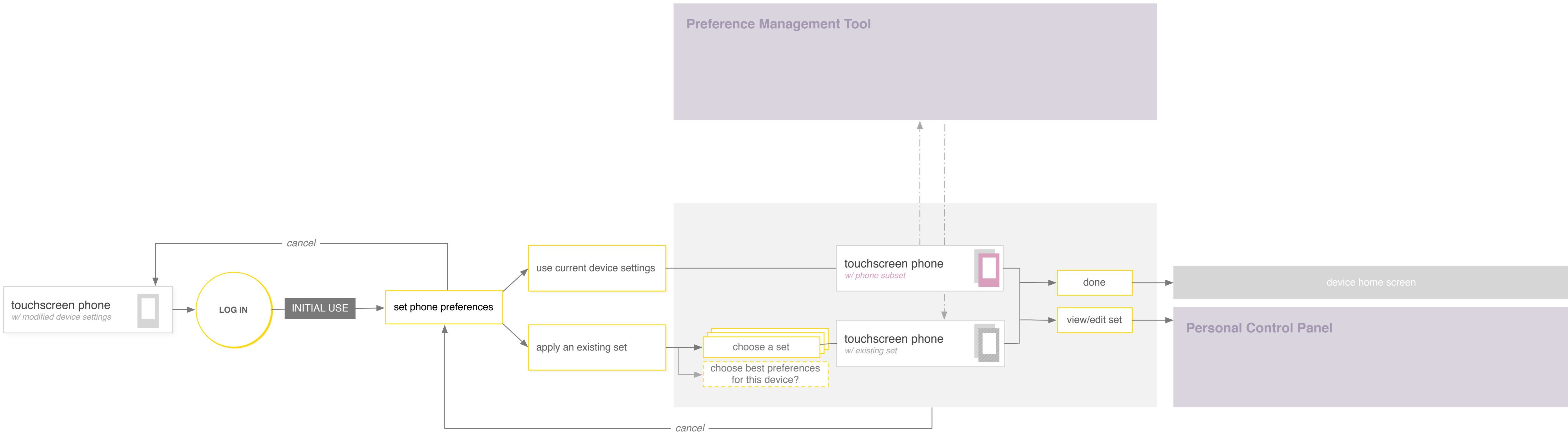


PREFERENCE MANAGEMENT TOOL

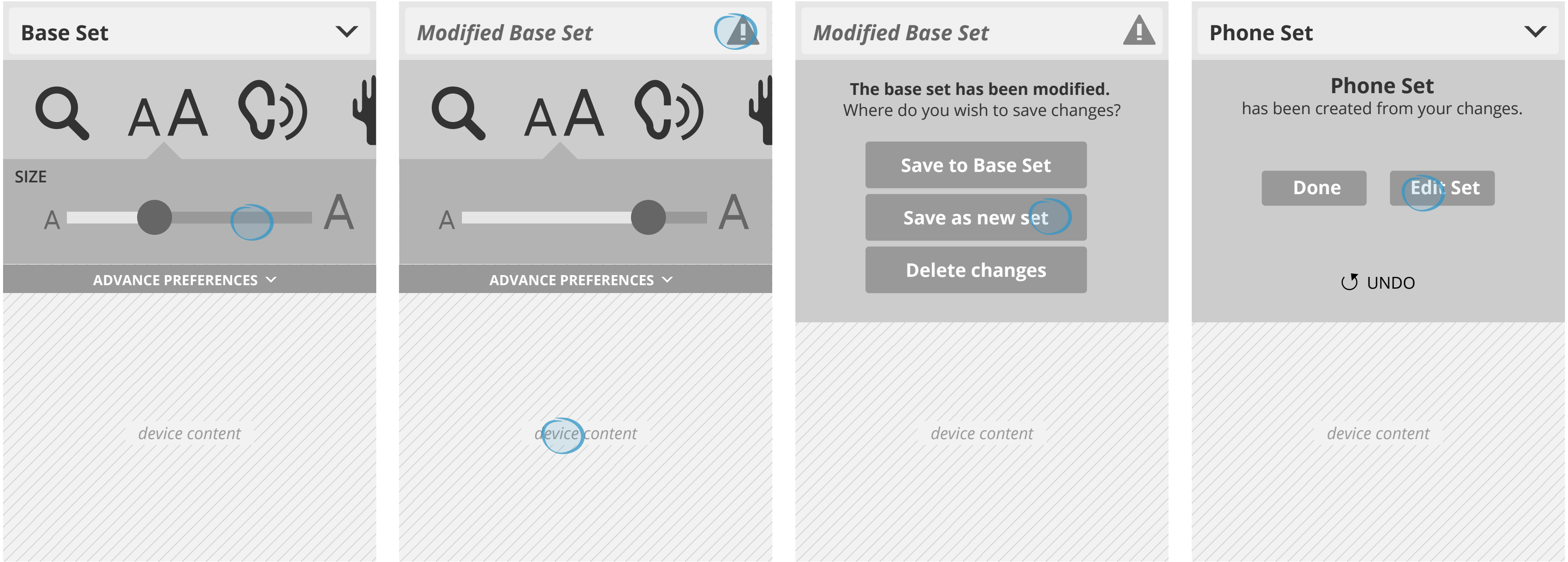
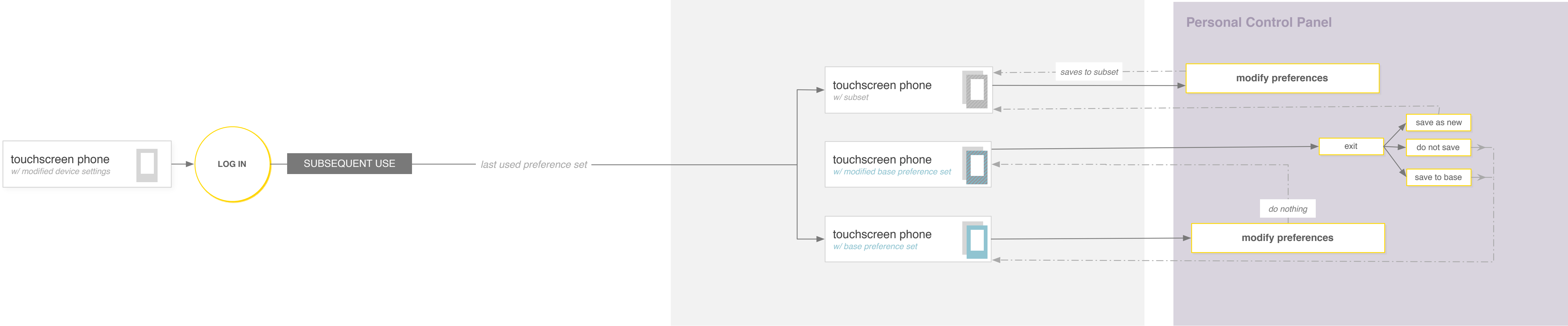






- PCP can be opened through button, gesture, keyboard shortcut, etc.
- PCP is closed by clicking back to device content.
- When visible, device content acts as a preview for changes done through the PCP.

PCP: MODIFYING BASE PREFERENCE SET

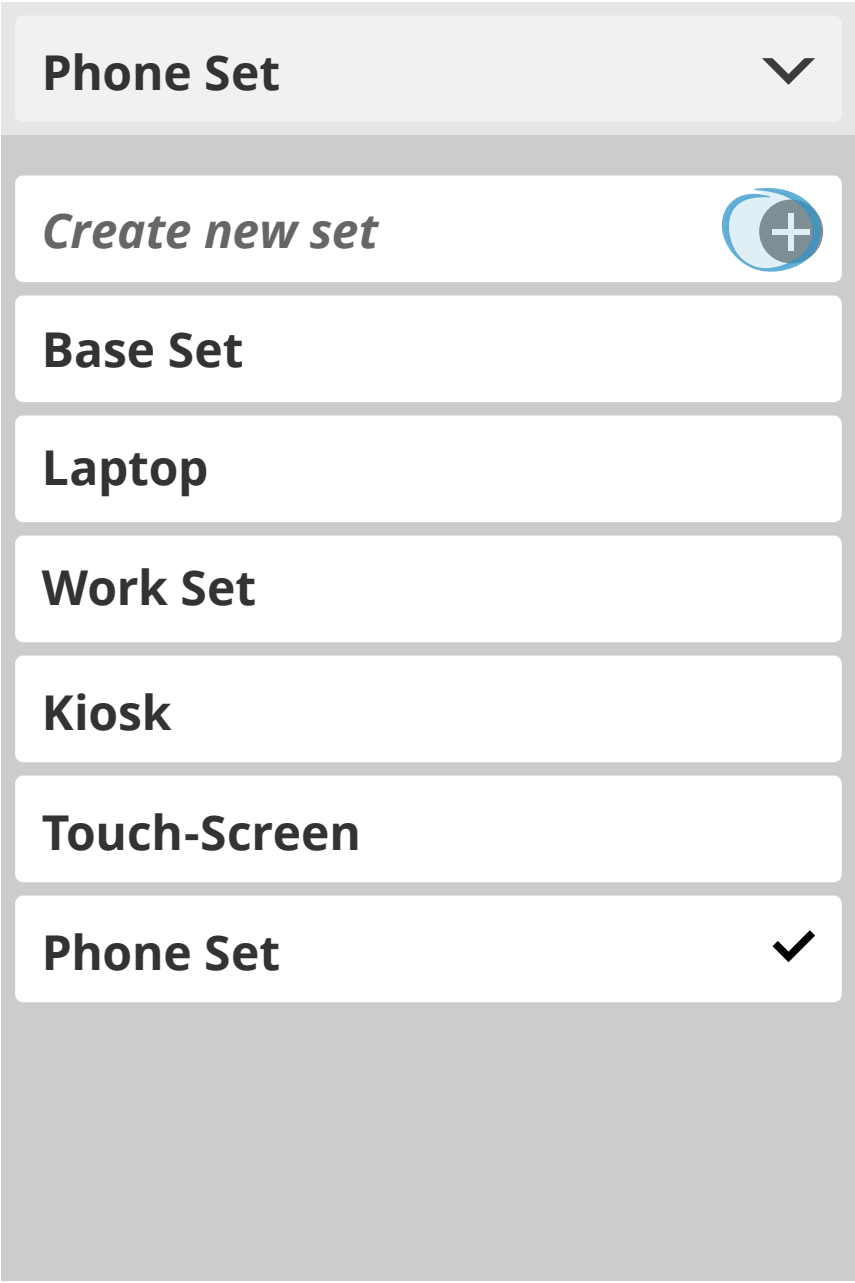
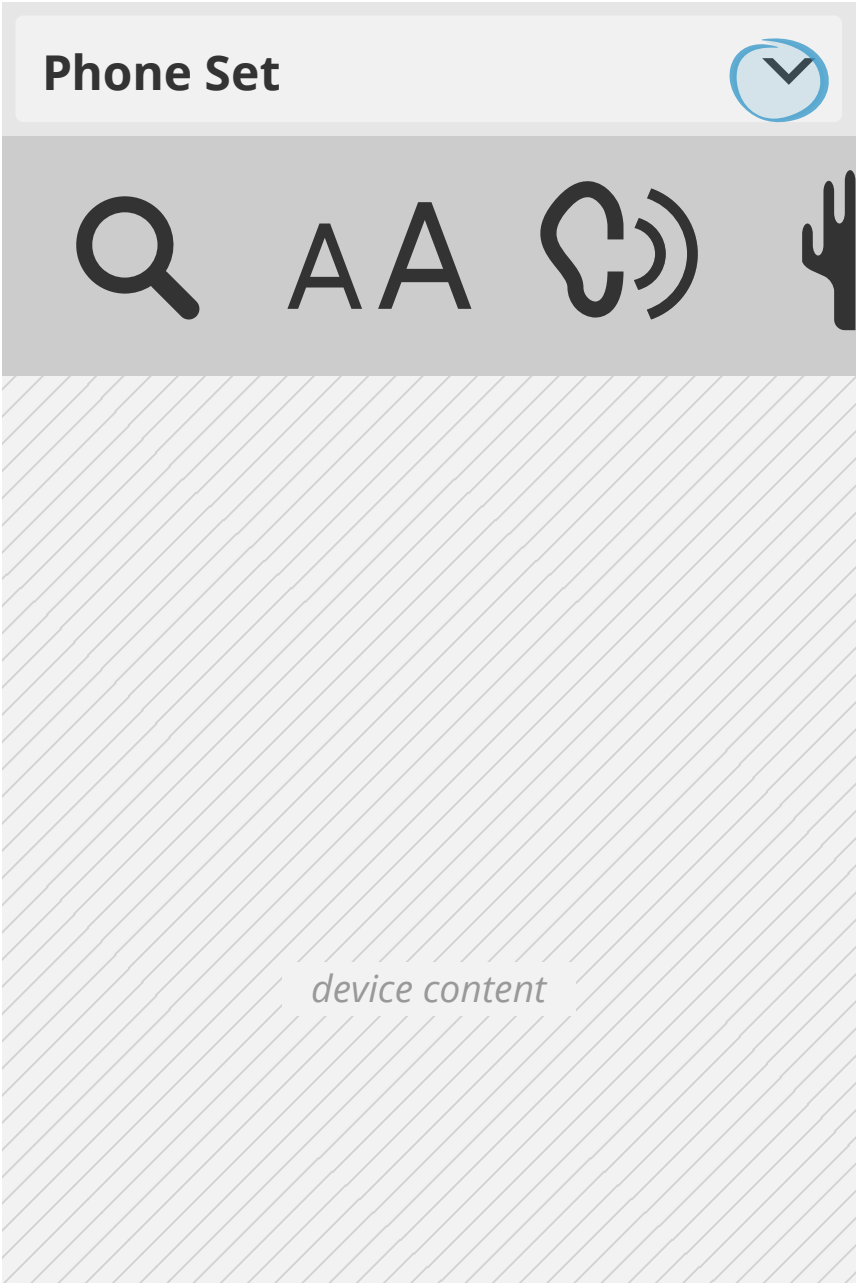
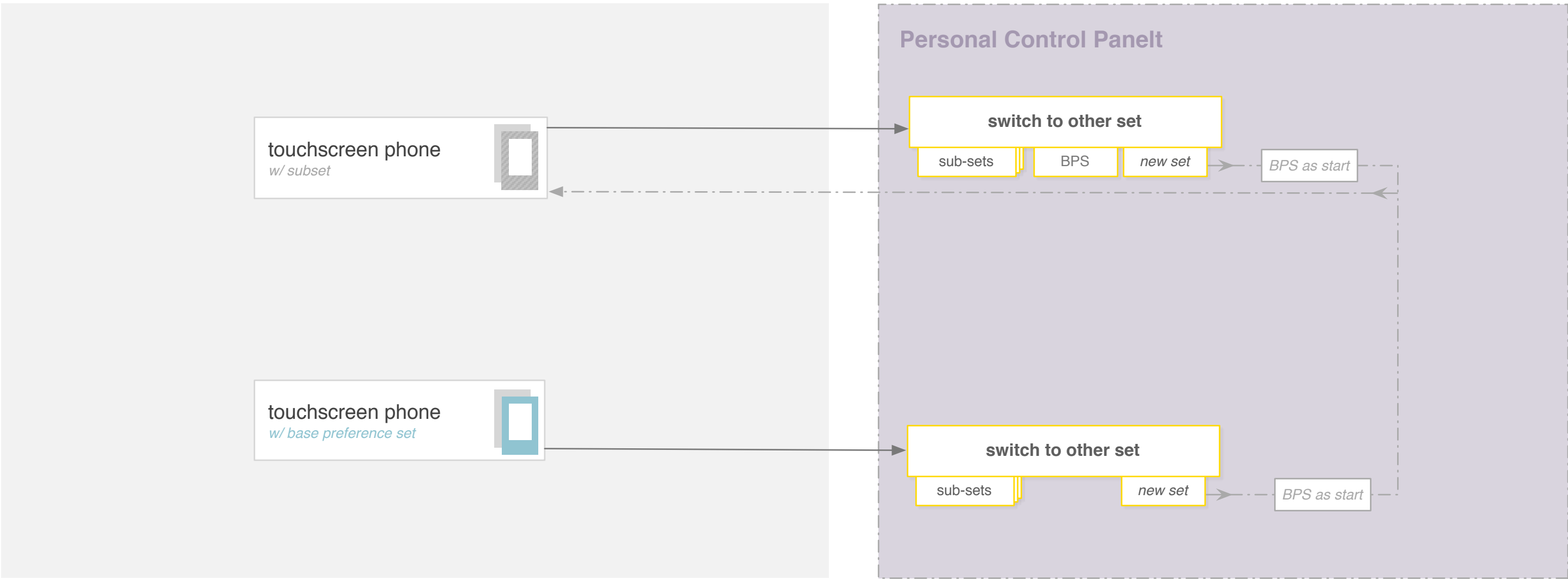


- Modifying the 'Base Set' creates a temporary 'Modified Base Set', change set drop-down is temporarily disabled.
- User is prompted to save changes when drop-down is clicked or exit is attempted.

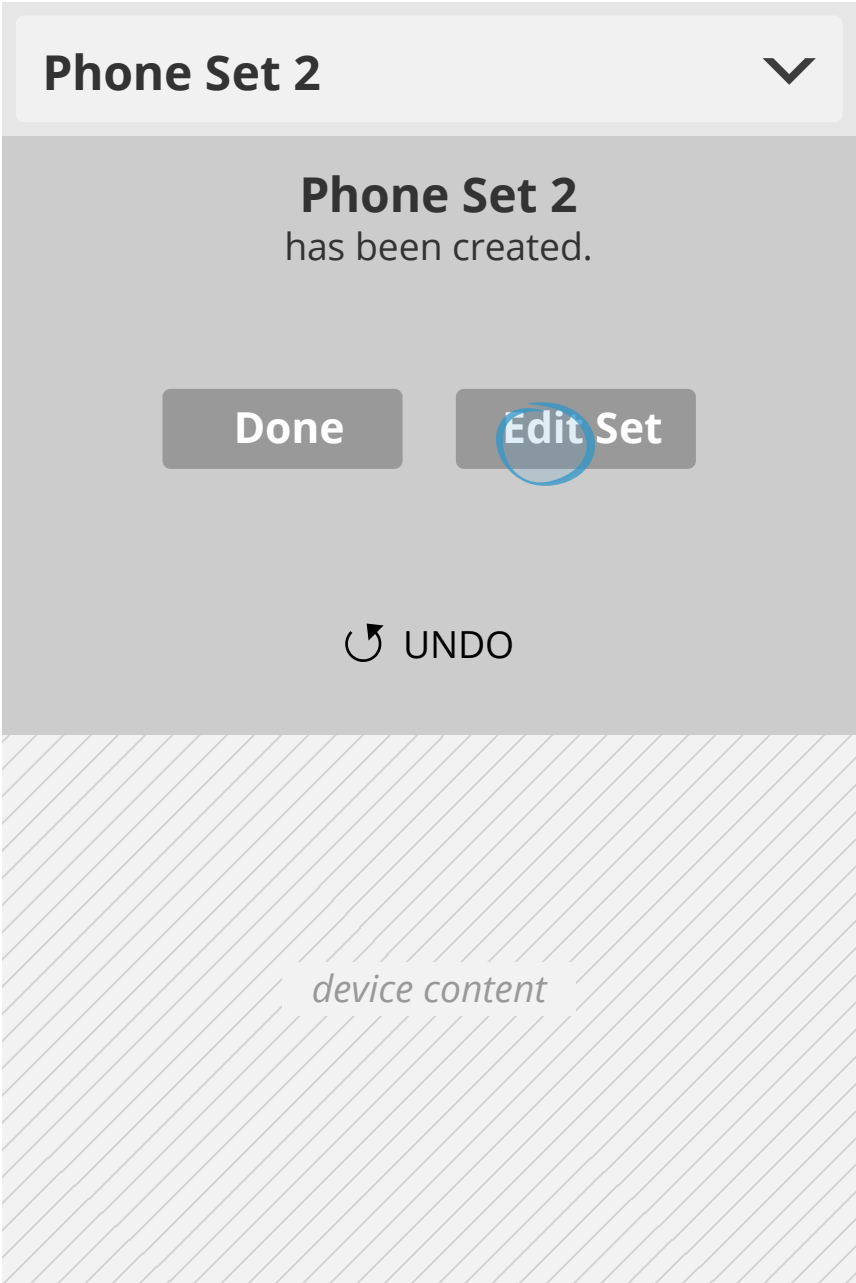
- User receives options on where to save changes from the 'Base Set'.

- Saving set re-enables change set drop-down.
- User can exit PCP or continue editing.
- 'Undo' returns to previous screen.

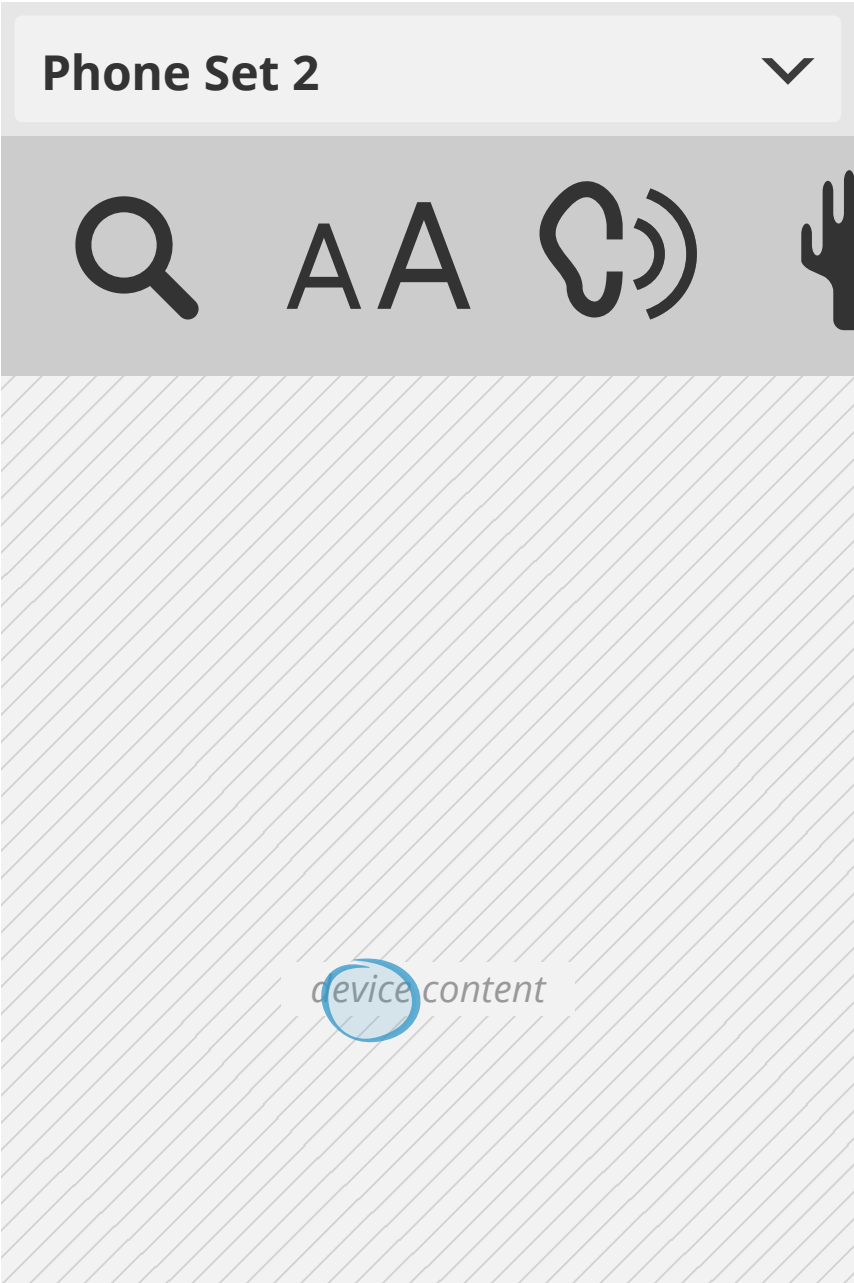
PCP: SWITCHING PREFERENCE SETS



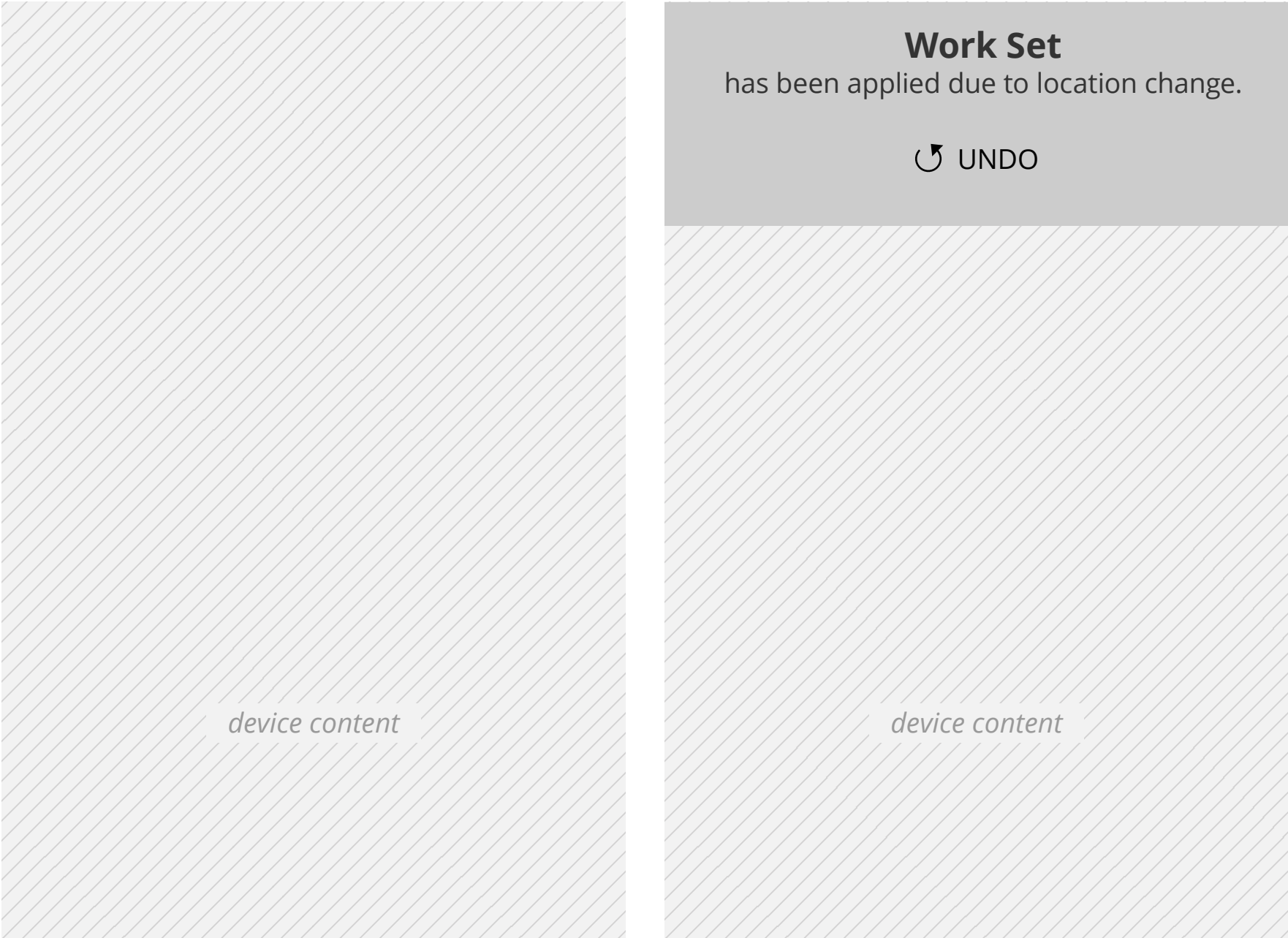
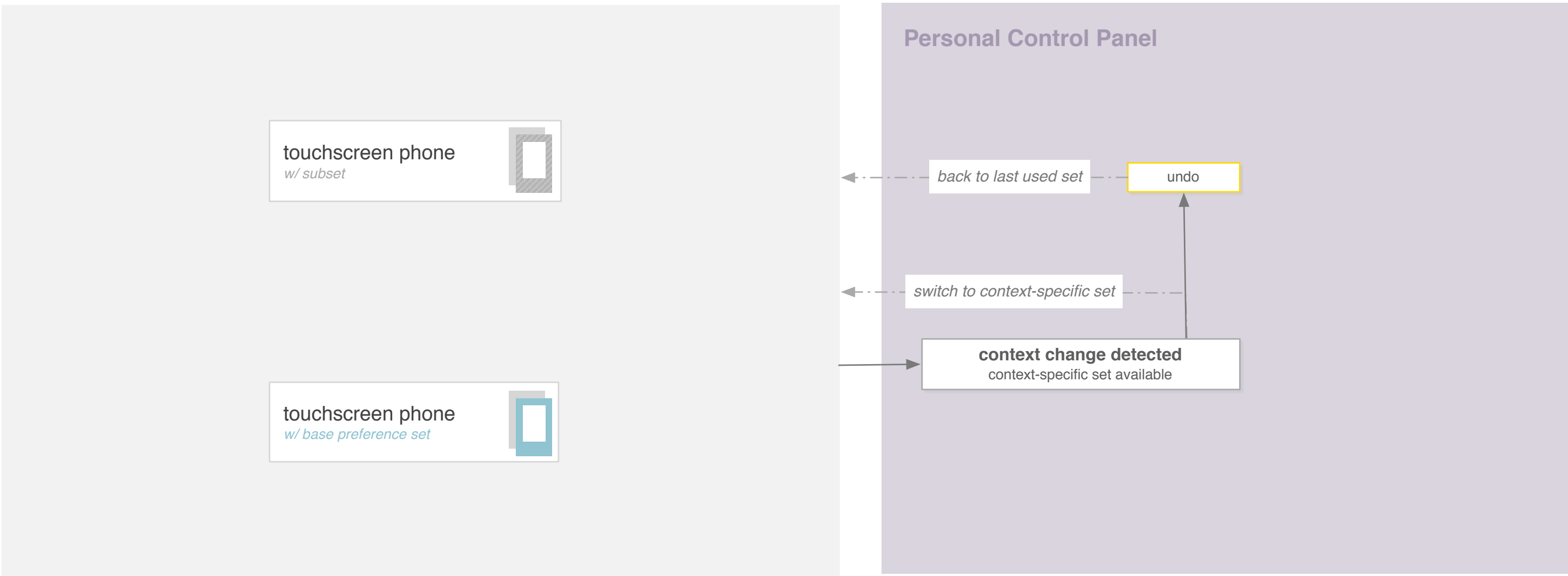
- Option to create a new set is available through the change set drop-down.
- Set can be deleted, renamed through the Preference Management Tool.



- New set is created using 'Base Set' as the starting preferences.
- Name is automatically created based on device type and can be changed through the Preference Management Tool.



- PCP is exited by clicking outside, anywhere on the device content.



- Set automatically changes when new context activates a different set, user can undo this change from message.
- Clicking outside of message closes it.



