

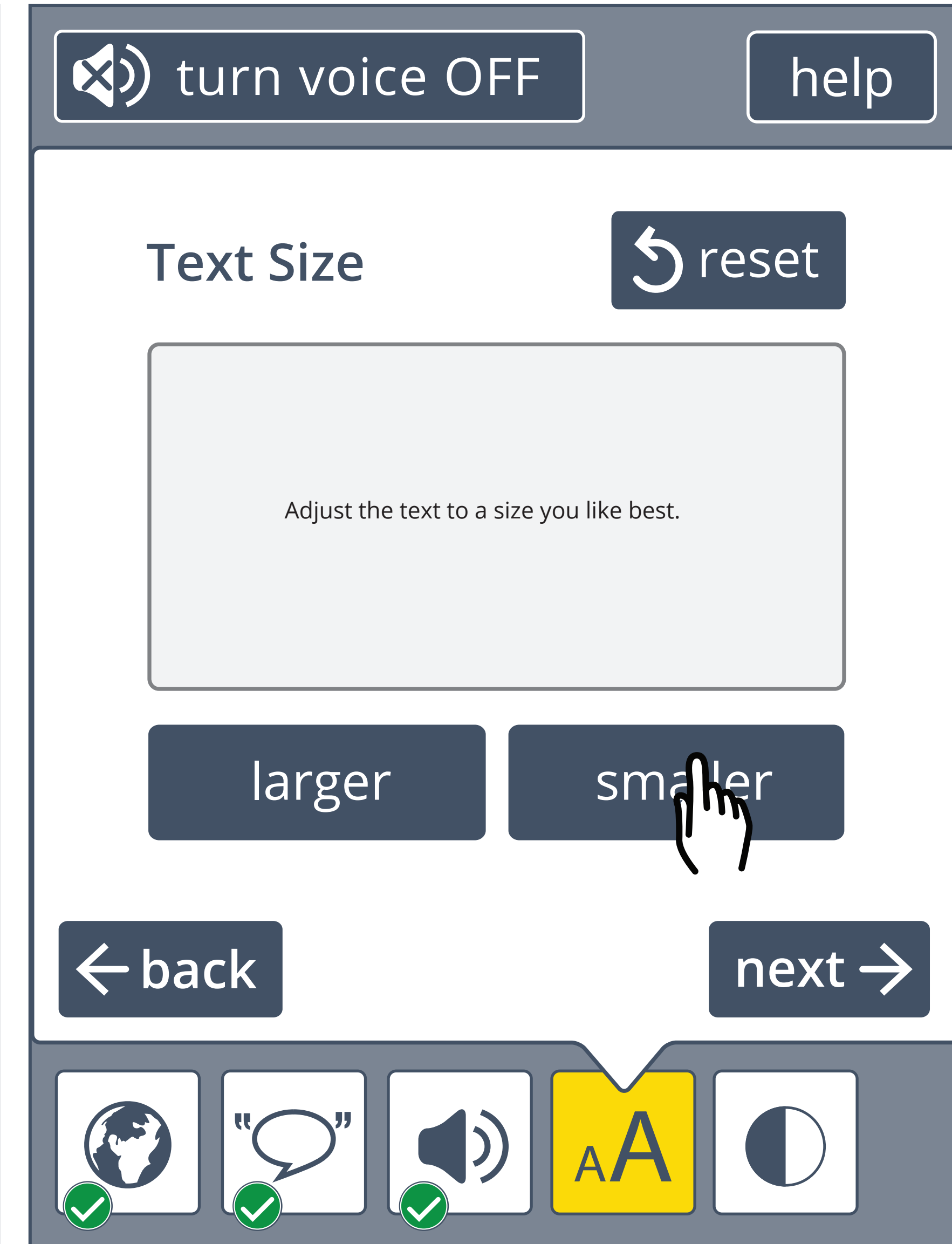
1 text size preference screen with preview - default size is what user would see on a "typical" website with no adjustments



2 reset appears once a change has been made



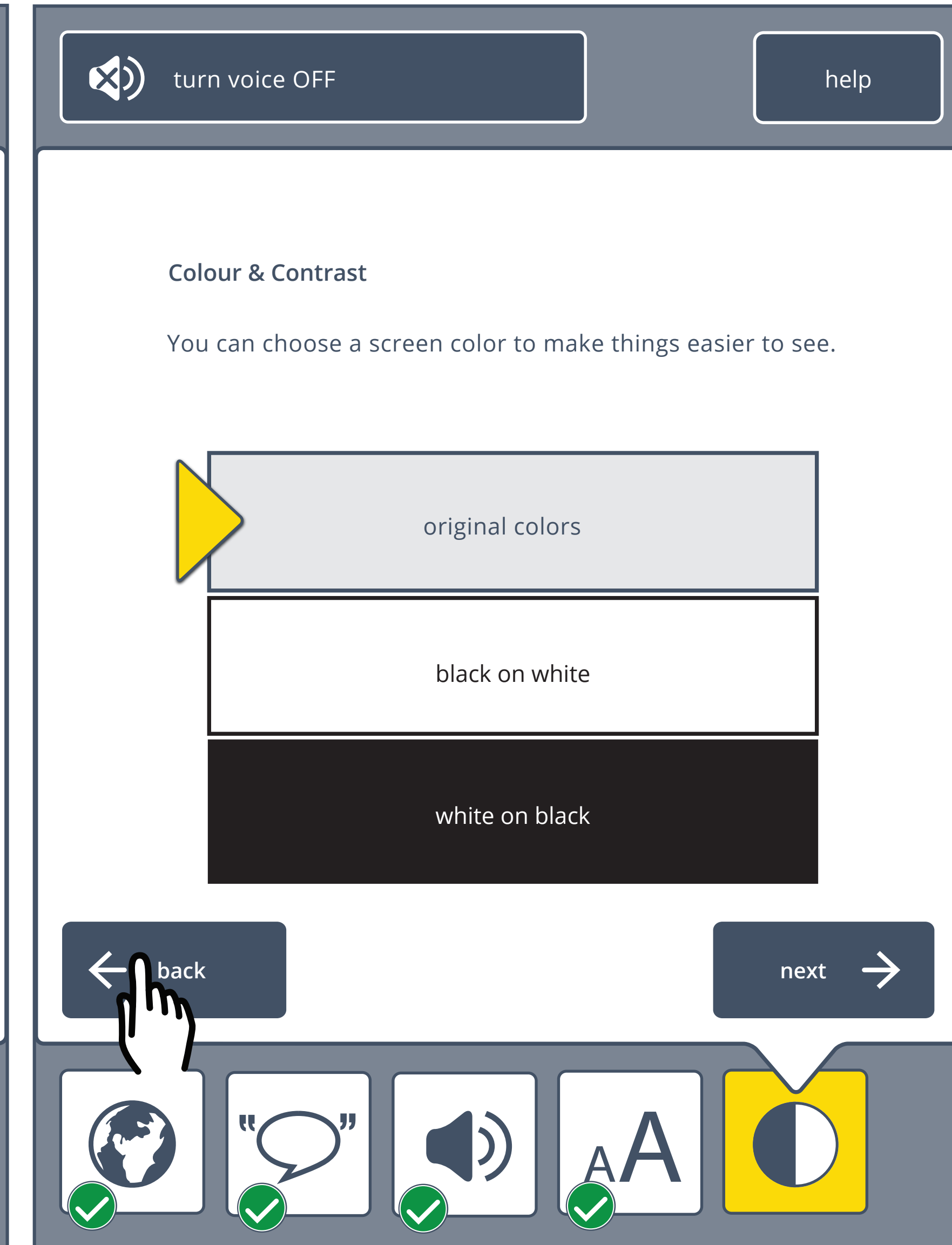
3 user adjusts text to a small size



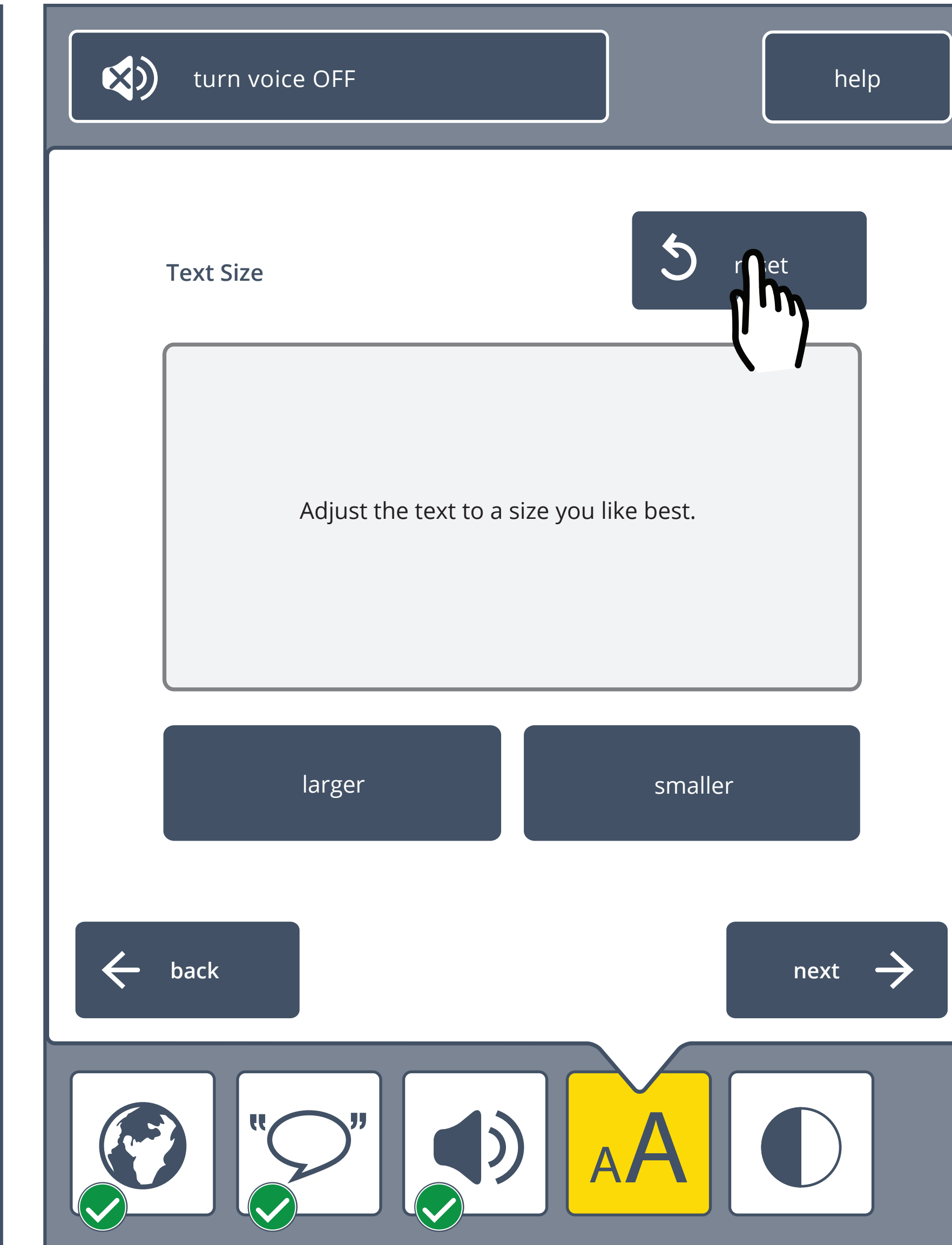
4 user selects next button



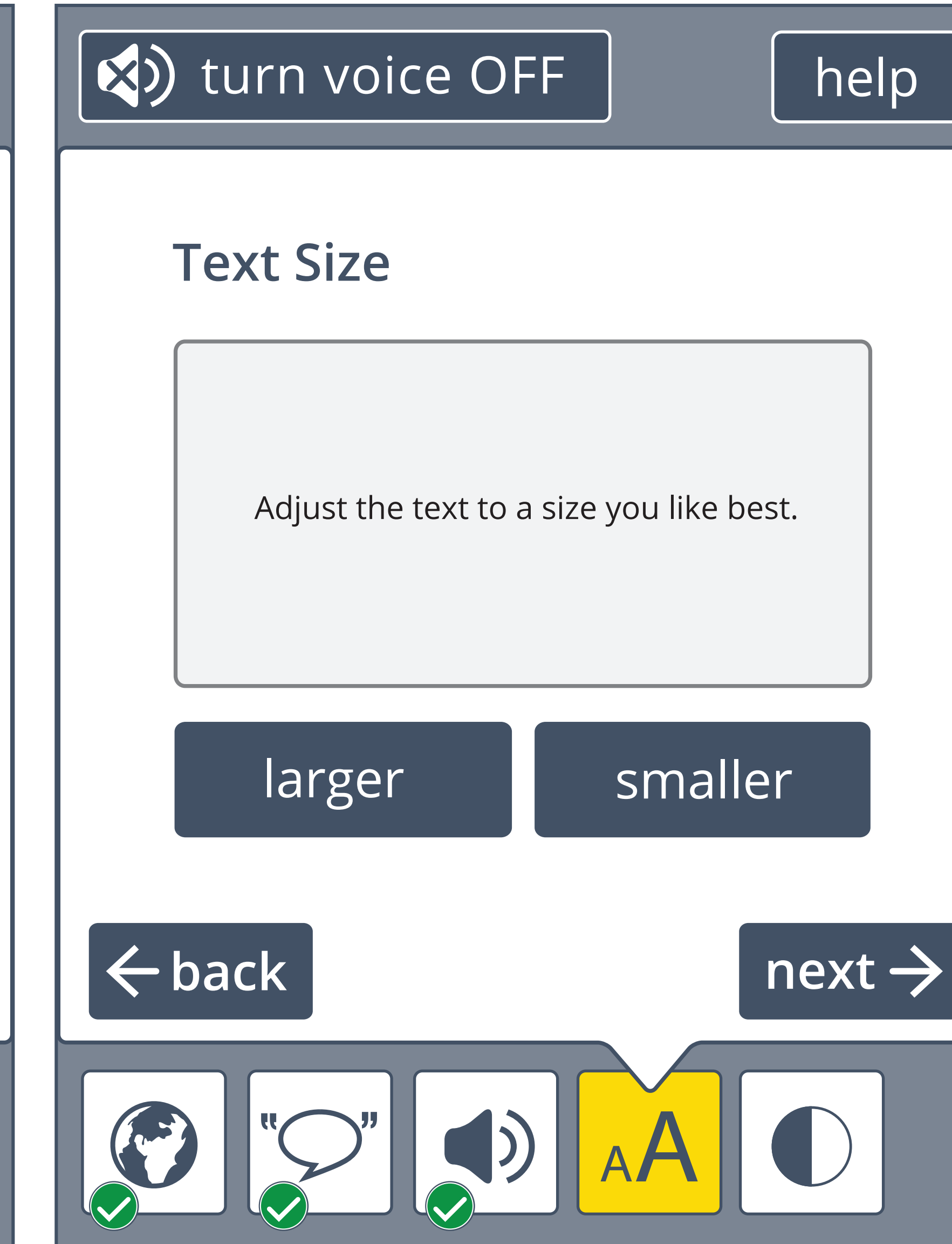
5 text size setting is applied to the tool once the user selects "next" from the text size screen (current color/contrast design) - user selects the back key



6 user returns to text size screen and selects reset button



7 text size is reset to default tool size*



proposed color/contrast preview

> reset button appears once a change has been made - resetting will return to default and remove the preference

> in the same way as text size, the preference will be applied to the tool once next is selected

turn voice OFF help

Color & Contrast

Adjust the screen colors to make things easier to see.

A A A A

← back next →

globe voice AA contrast

turn voice OFF help

Color & Contrast

reset

Adjust the screen colors to make things easier to see.

A A A A

← back next →

globe voice AA contrast