



# Overview

These are the Infrastructure diagrams for Prosperity4All. It is a high-level design document. It shows the components and subsystems that comprise the Prosperity4All Infrastructure and the interconnections among those pieces. The diagram is based on the information contained within the P4A Description of Work (DOW).

This overall design is based on the following hierarchy:

**Prosperity4All Infrastructure** – the entire collection of deliverables

**Foundation** – supporting services made available to the rest of the Infrastructure

**Functional Packages** – the individually identified pieces of the Infrastructure that are identified as work packages. These are separately developed but highly interdependent features of Prosperity4All that encompass its primary functionality.

**Individual Elements** – the sub-features or separate elements for each of the functional packages.

The diagram is in multiple layers. At the lowest level (on the next page) is the foundation of the Infrastructure diagram. It is followed by the workpackages diagram which shows the major functional packages of the Infrastructure. The individual elements for each major work package are then shown. Finally, the communications and connections among the components are presented. This collection of diagrams can also be used to show the interactions between an individual (persona) and the entire Infrastructure by highlighting only those packages, elements, and connections that are applicable to that specific persona or even use case. This diagram documents the design inclusive of all Prosperity4All functionality across the entire Infrastructure, and this can be used as the basis for specific personae and use cases.

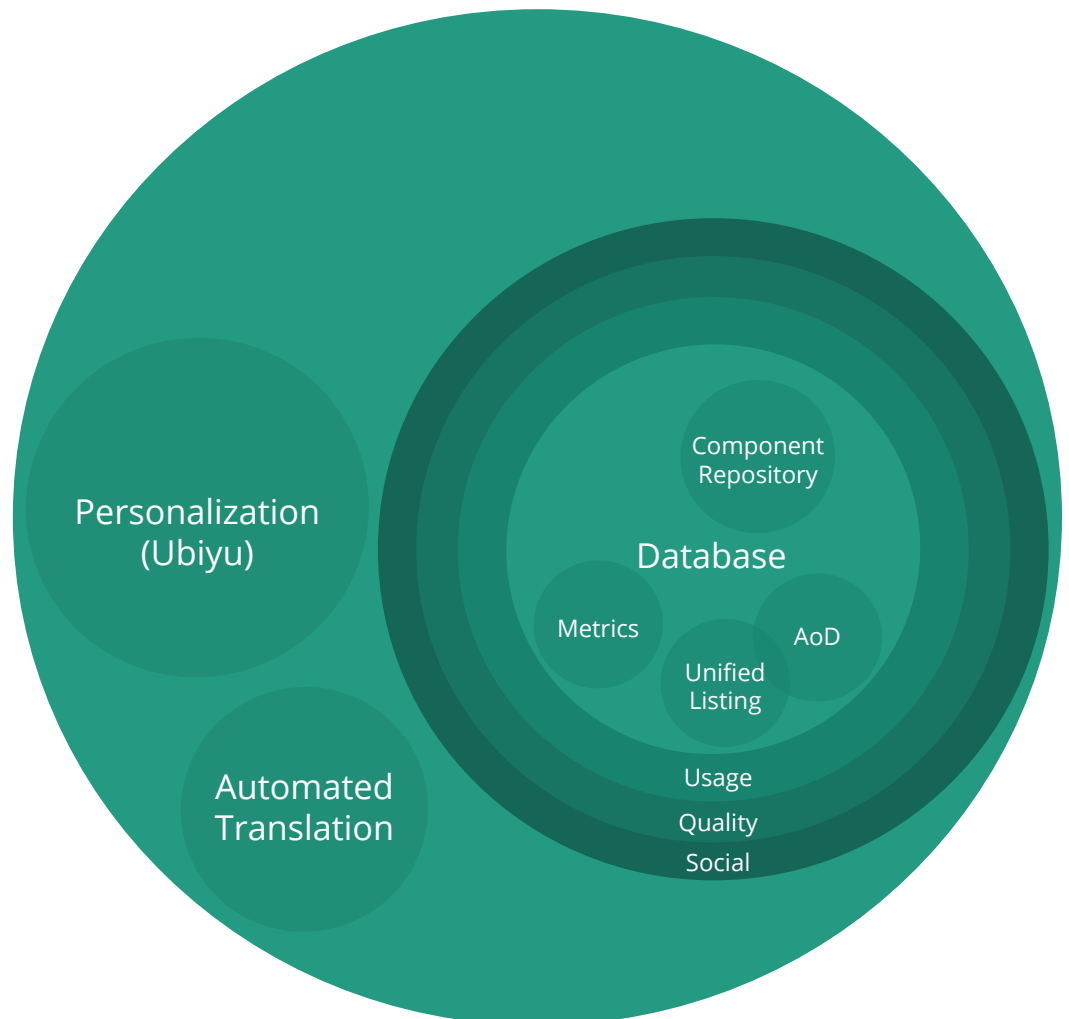
As with all of the design deliverables from SP1, this is intended to be a fluid communications device and not a finalized document. It should be viewed and reviewed with a goal of finding weaknesses, missing information, discrepancies, new thinking and ideas, greater detail, and other improvements.



## Foundation

The foundation of the P4A infrastructure shows those systems that are all and always available to the other functional packages of P4A. This foundation includes the **Personalization (Ubiyu-Cloud4All)** components, which are being built separately but need to be included within and accessible to the Prosperity4All Infrastructure. The **Database** is the central repository for all information on technologies, services (both human and computer), complete systems (like SP3 developments), components (SP2 systems), a Component Repository, which is likely that something like GitHub will be used as the repository for all P4A code-based components, and others. The database serves as the central storage location for the Unified Listing, Assistance on Demand, and

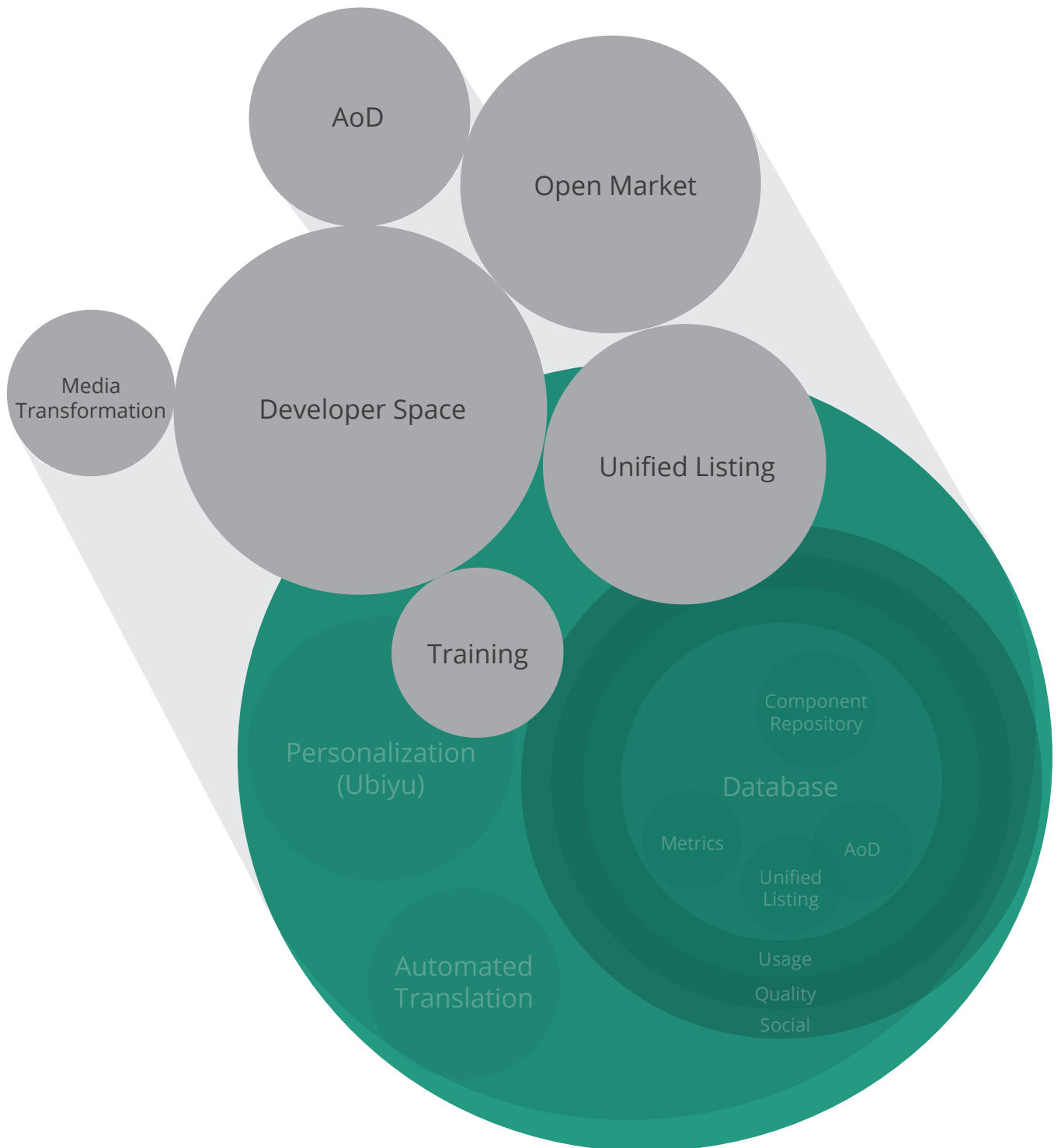
any of the other functional elements that need to store or search information on products or services. The database includes a metrics component which stores information on usage, quality, feedback, and other social data for the P4A Infrastructure and its Packages and Elements. The database is encapsulated by a **Usage, Quality and Social Tracking Tools** which will be used to capture usage and quality feedback and report back on the same. The final piece of infrastructure is the **Automated Translation Service**. This is for language translation. Like with the component repository, this will likely be a customized skin on an existing service like Google Translate.





## Functional Packages

This diagram shows the functional packages for the Prosperity4All Infrastructure. The individual work packages are described in the DOW and more fully detailed in other deliverables. This diagram just pulls them all together. The following pages show the individual elements for each package.



# Developer Space Elements

The porousness of each element/group of elements is indicated by the yellow boundary line:

## Solid Line: Closed and Tested Element

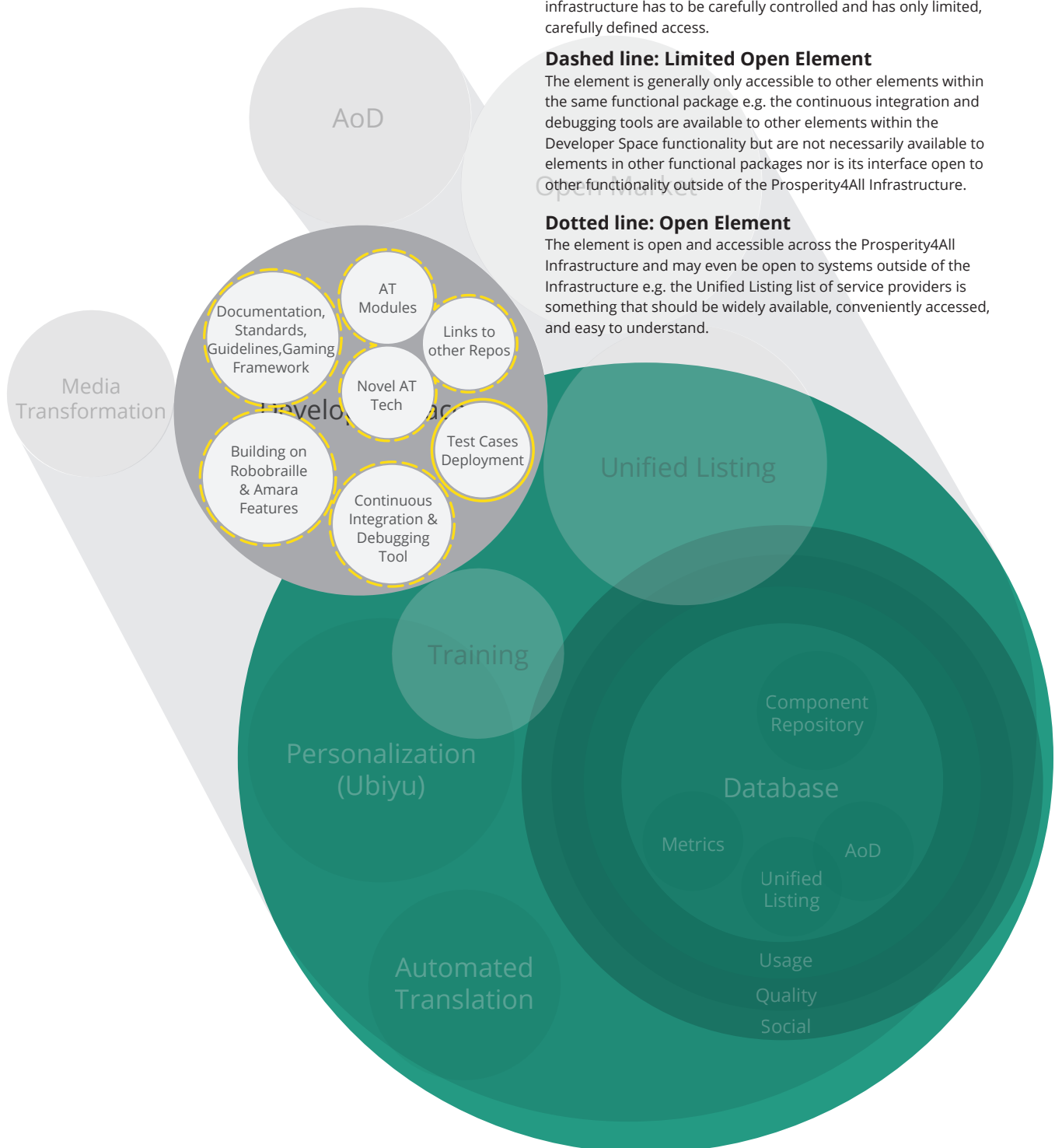
The element is only accessible under controlled conditions. It basically functions and exists independent of other elements e.g. in the Developer Space, the functionality of Deployment Test Cases and the quality assurance and testing associated with the quality infrastructure has to be carefully controlled and has only limited, carefully defined access.

## Dashed line: Limited Open Element

The element is generally only accessible to other elements within the same functional package e.g. the continuous integration and debugging tools are available to other elements within the Developer Space functionality but are not necessarily available to elements in other functional packages nor is its interface open to other functionality outside of the Prosperity4All Infrastructure.

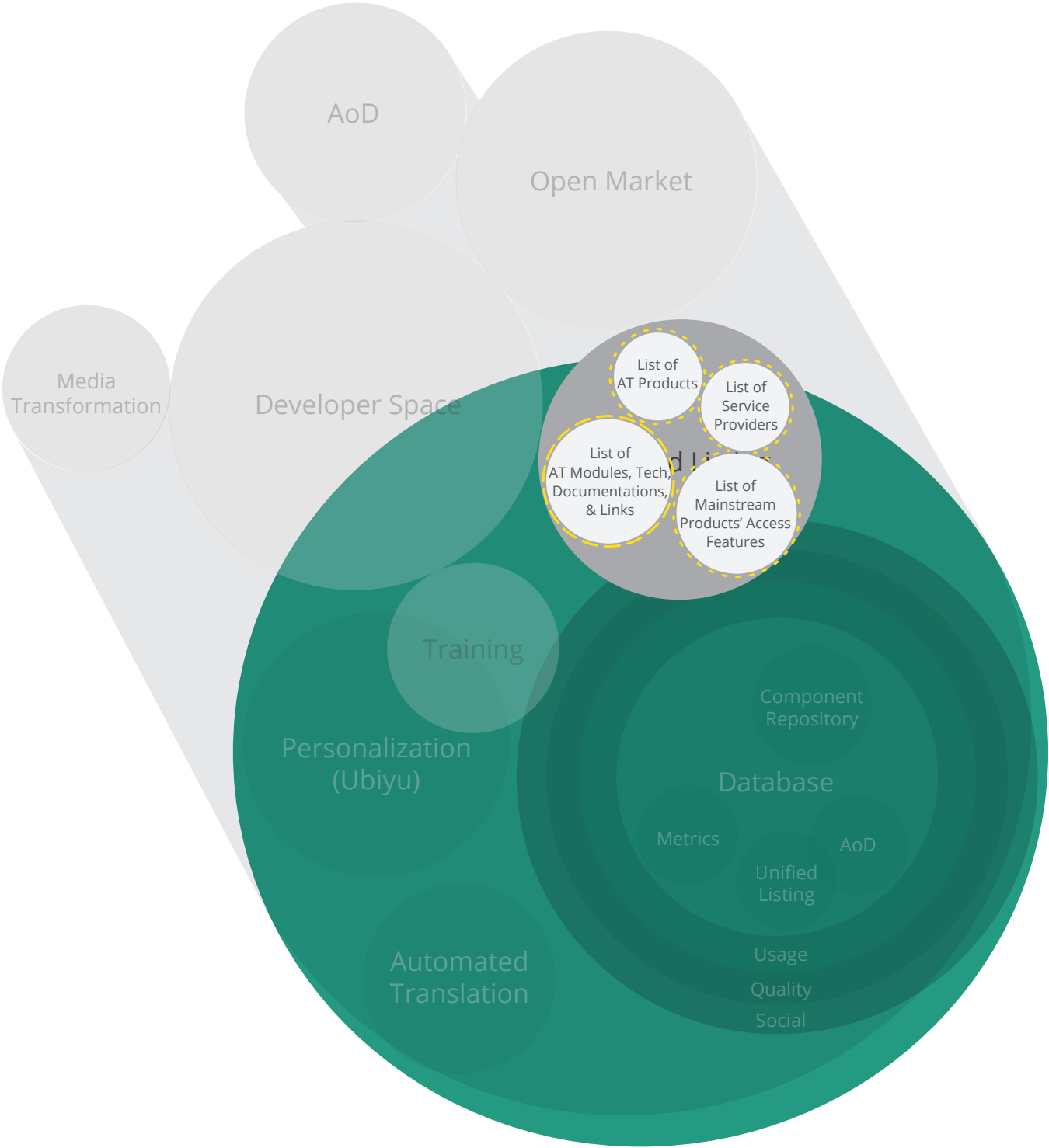
## Dotted line: Open Element

The element is open and accessible across the Prosperity4All Infrastructure and may even be open to systems outside of the Infrastructure e.g. the Unified Listing list of service providers is something that should be widely available, conveniently accessed, and easy to understand.



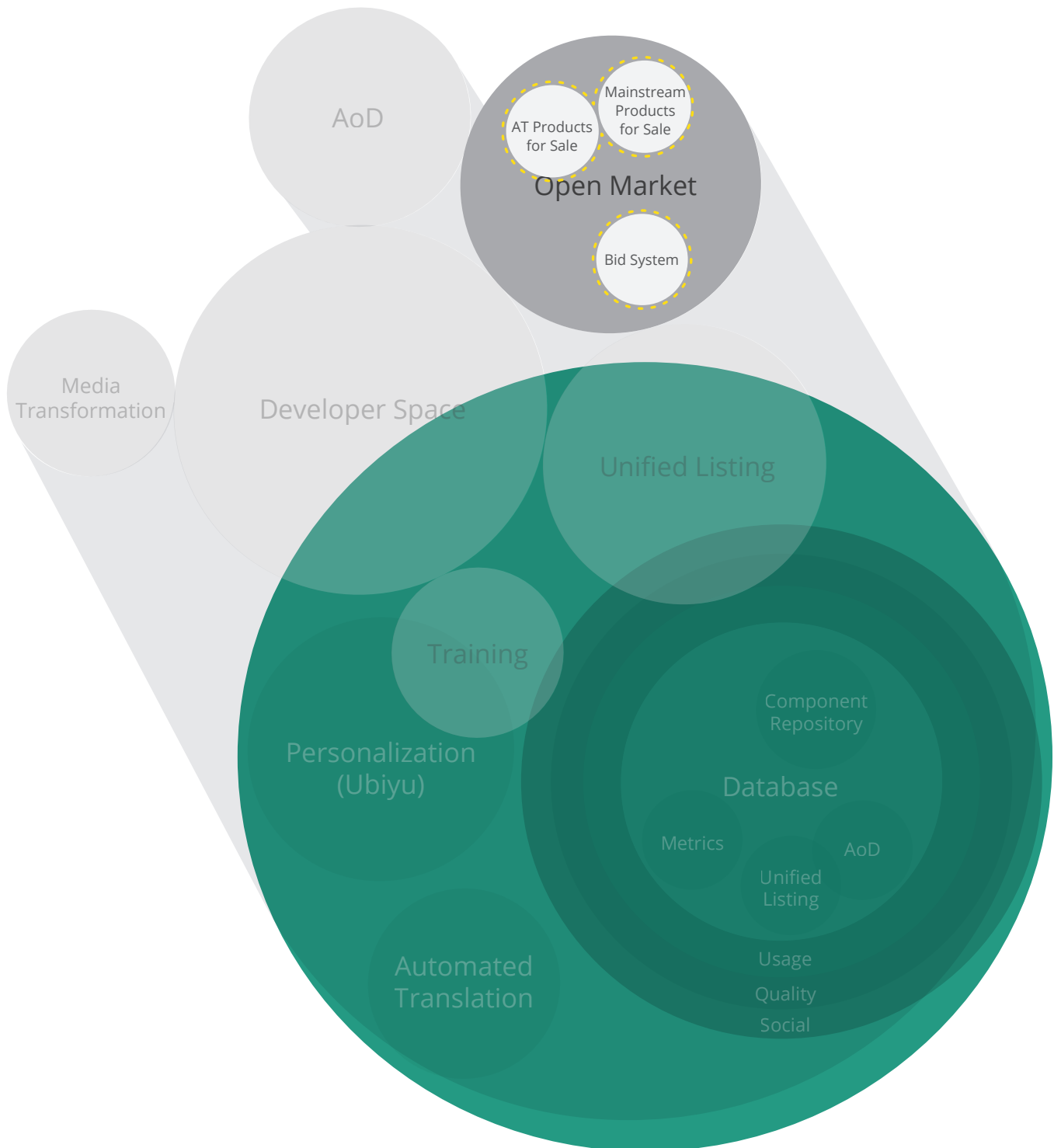


# Unified Listing Elements



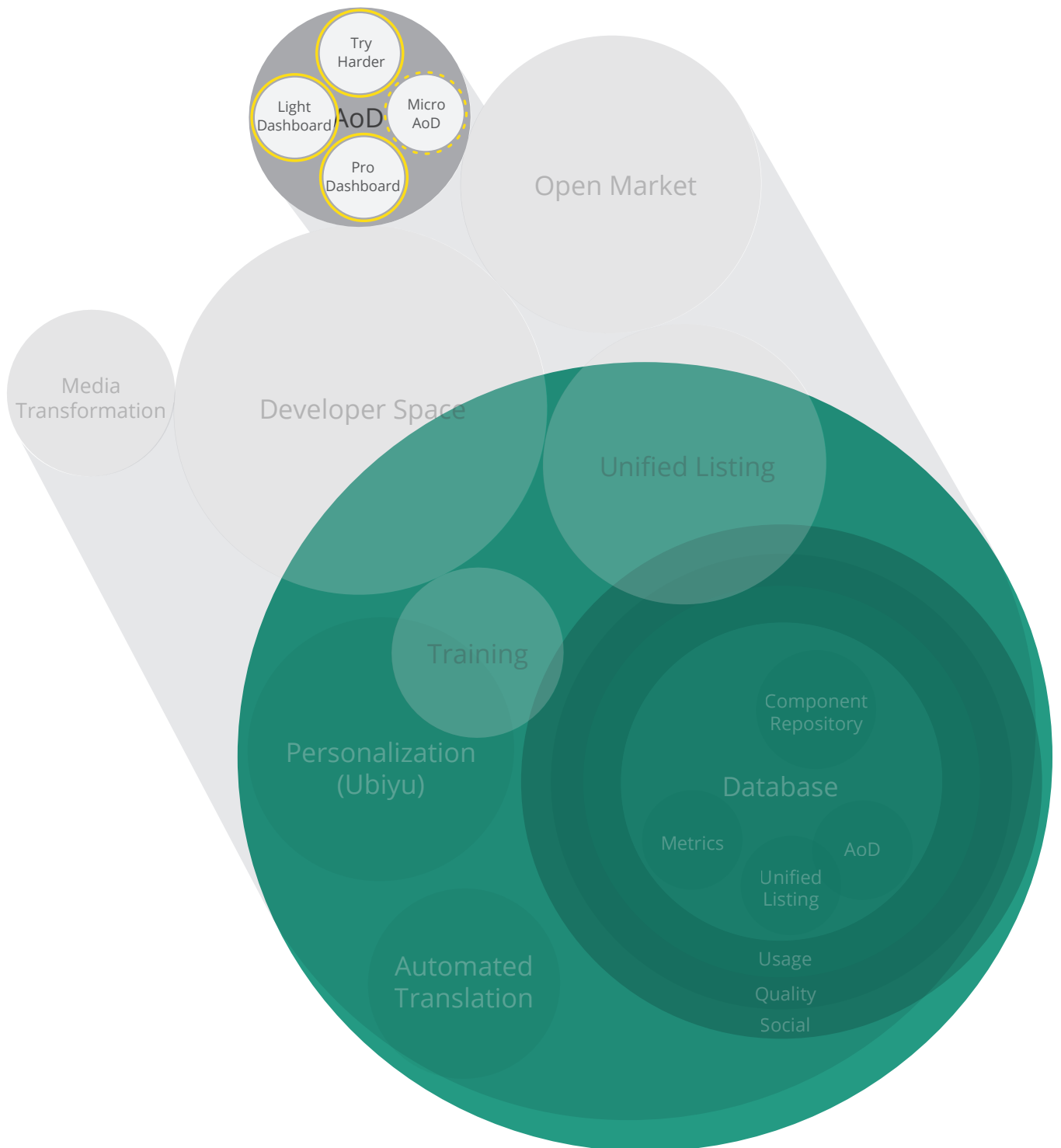


## Open Market Elements



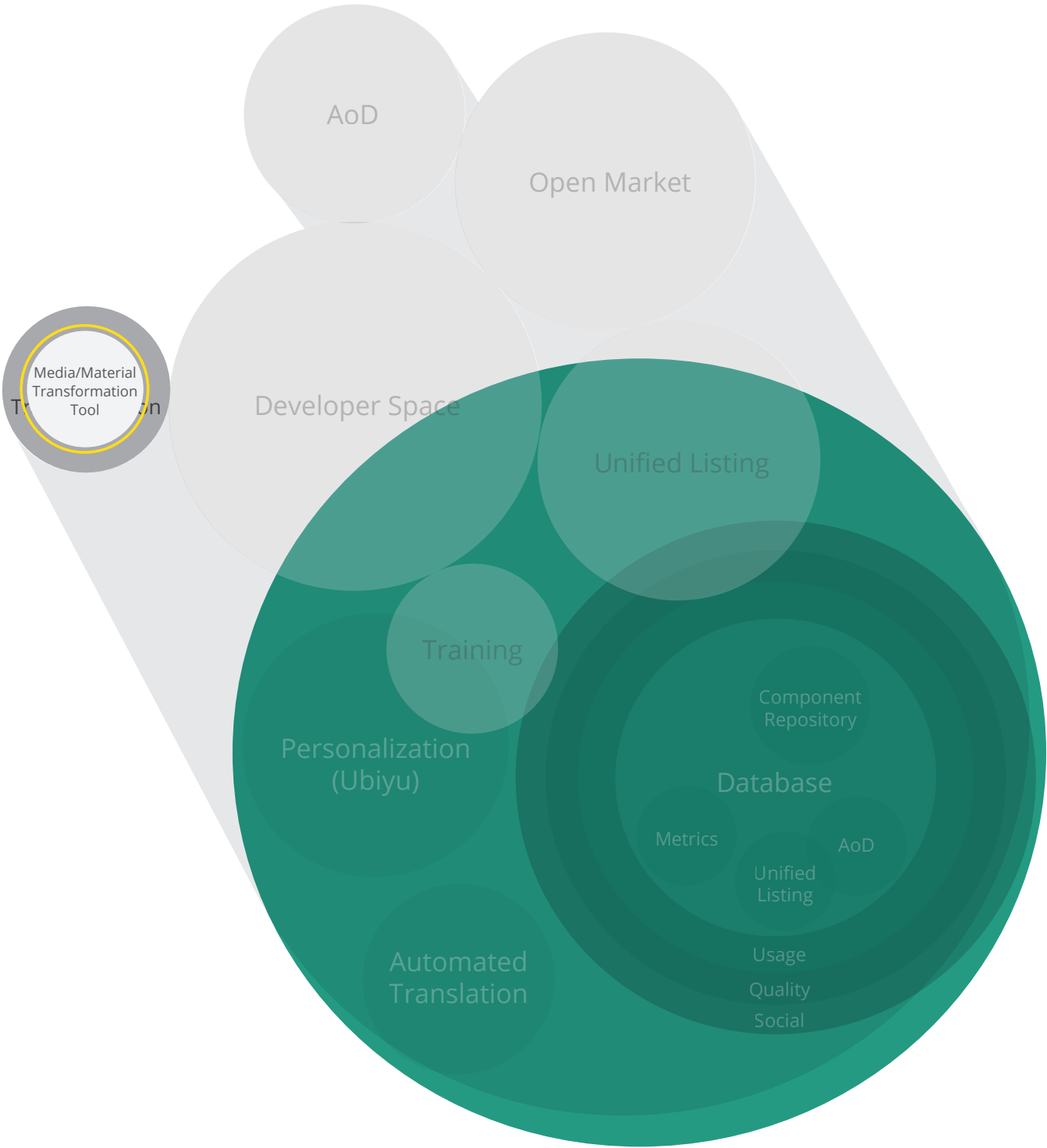


## AoD Elements





# Media Transformation Element







# Training Elements

